



WHITE PRIZM

DESIGNER SURFACES

# Methaldone

22 icone intramontabili emergono con l'aurora, avvolte da un alone di luce preziosa, vestite di metallo, eroine dai mille riflessi. Bagliori misteriosi, frammenti d'oro e argento che incarnano il flusso della vita, il battito del cuore delle epoche: parure di sole e luna nei loro abiti di rame, oro rosa, pelle di serpente, ottone, argento in fili, oro spazzolato.

22 timeless icons emerge with the dawn, wrapped in a halo of precious light, dressed in metal, heroines with a thousand reflections. Mysterious flashes, gold and silver fragments that embody the flow of life, the heartbeat of the ages: parures of sun and moon in their copper, rose gold, snakeskin, brass, silver thread, brushed gold dresses.



Furia



A





## Furia



FURIA BLU



FURIA NOCCIOLA



FURIA VIOLA



FURIA AZZURRO



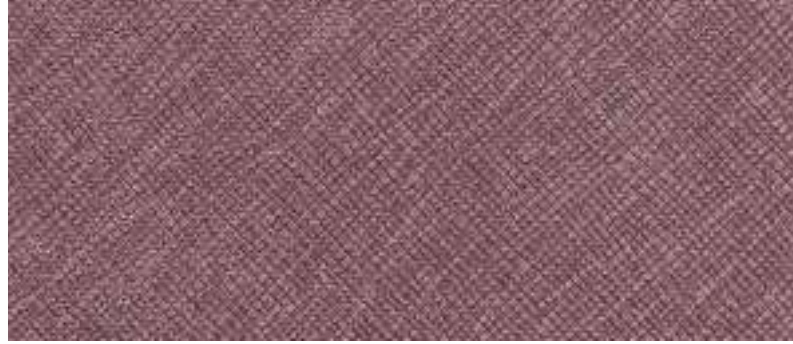
FURIA VERDE



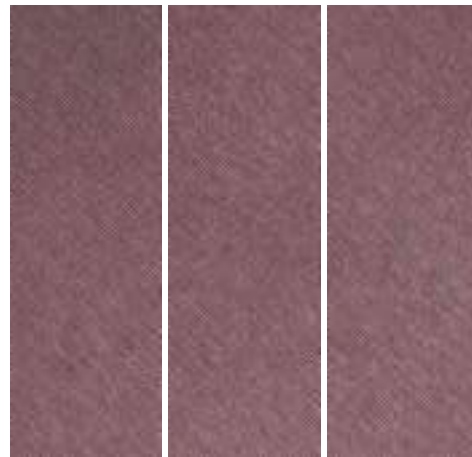
## Capelli D'Angelo



CAPELLI D'ANGELO

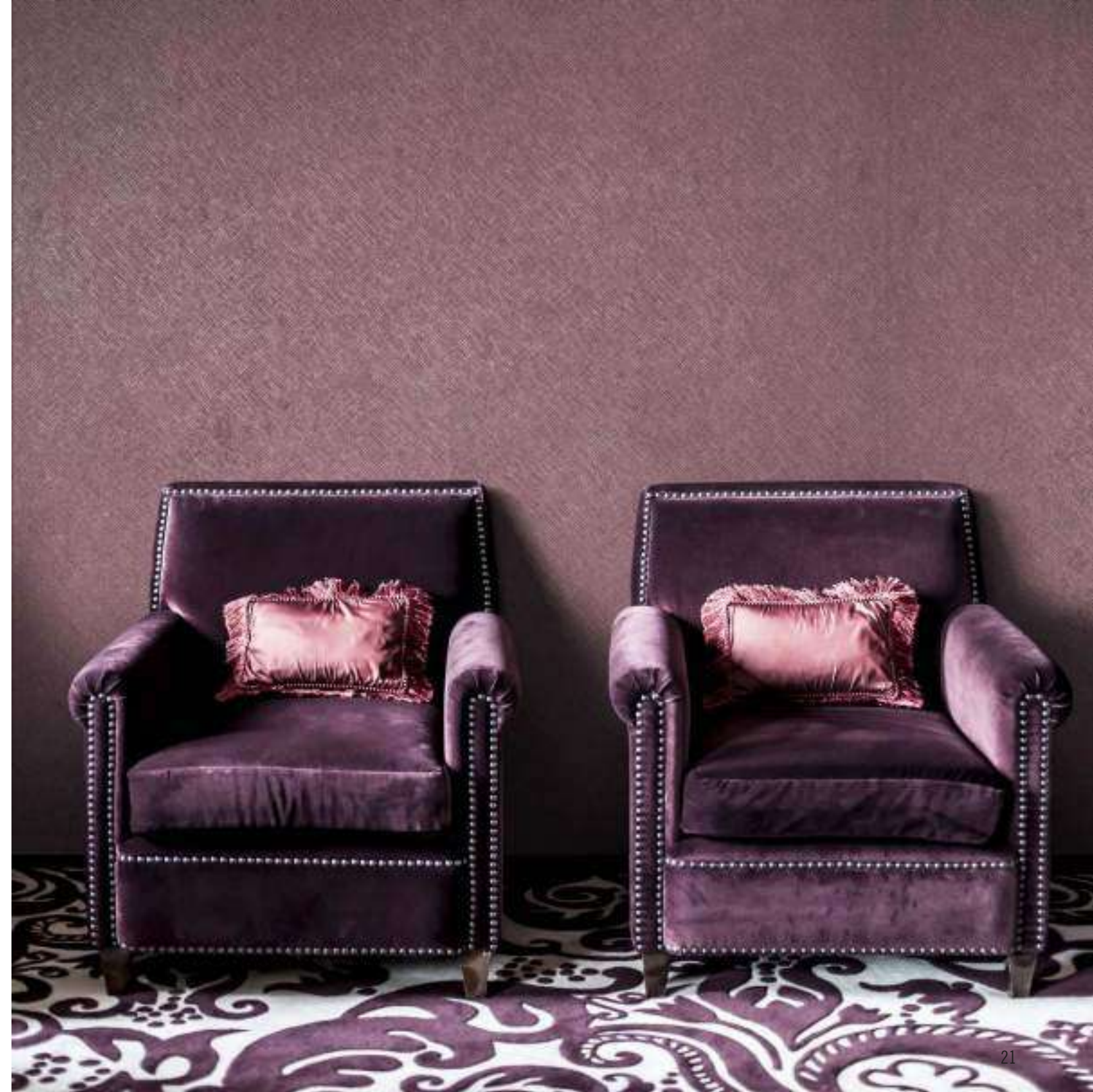


## Candy-Candy



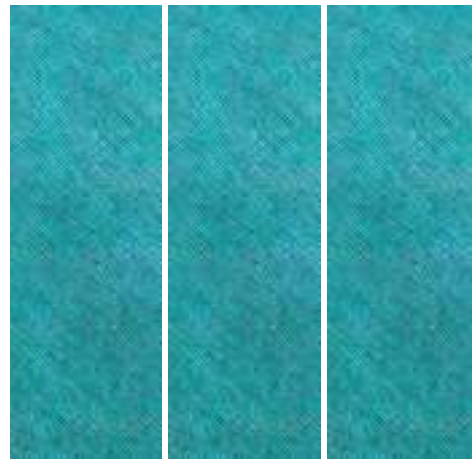
CANDY-CANDY

A



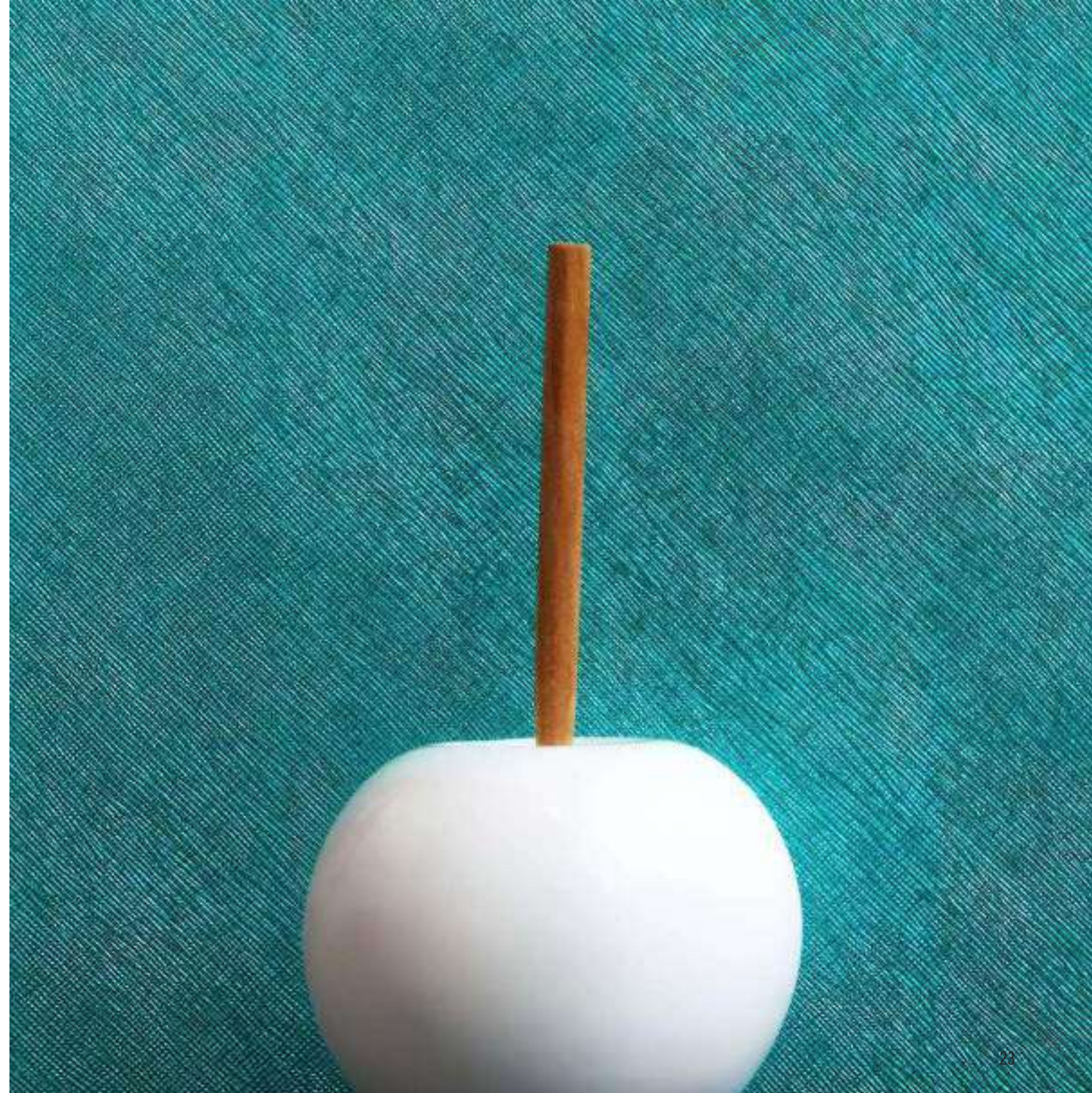


# Tiffany



TIFFANY

A



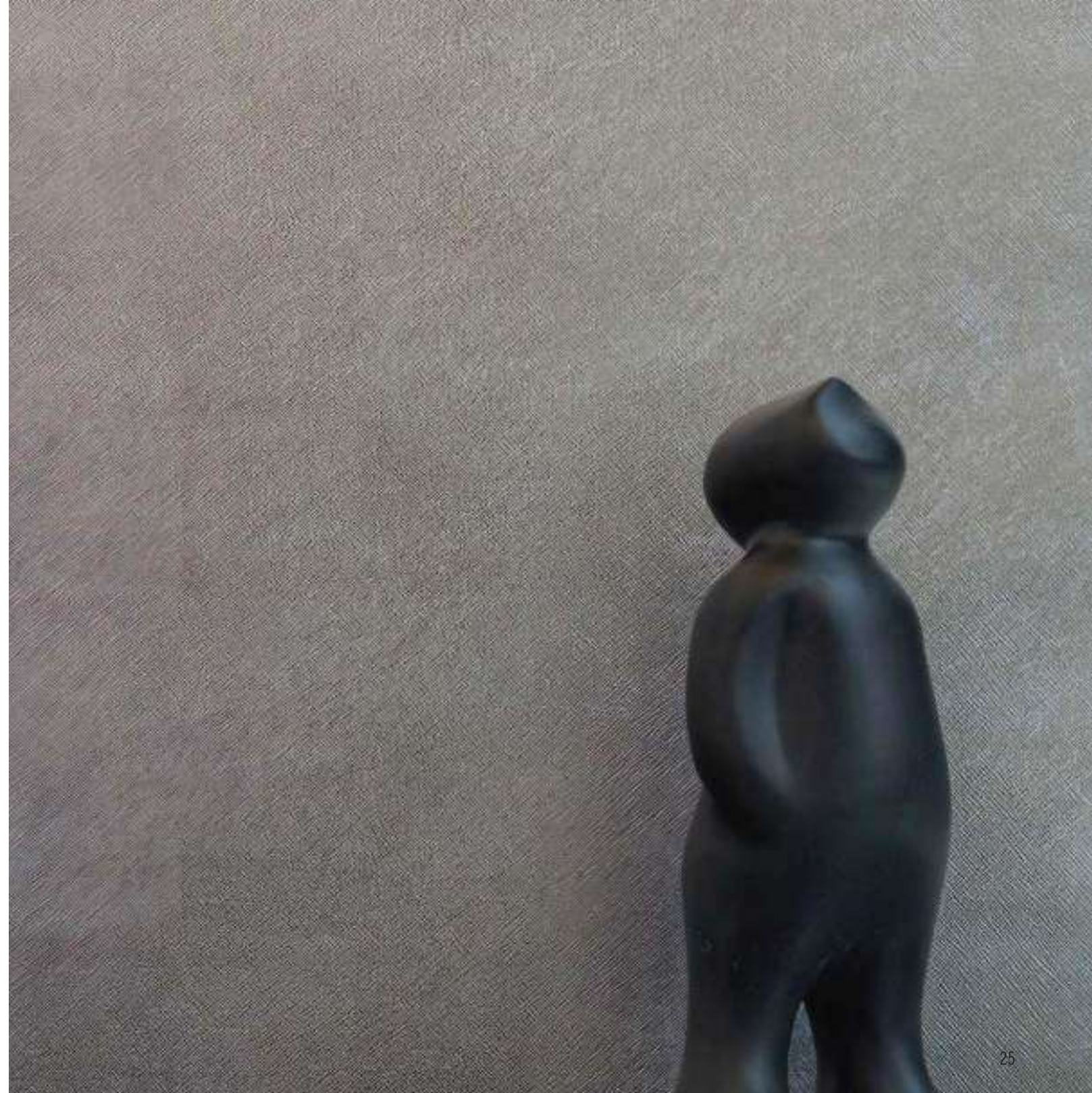


## Argento Vivo

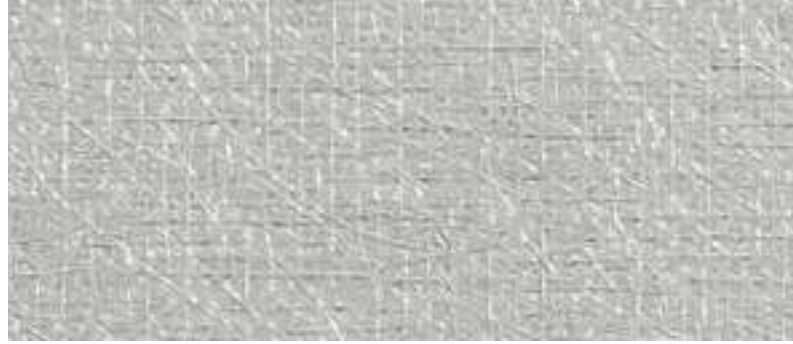


ARGENTO VIVO

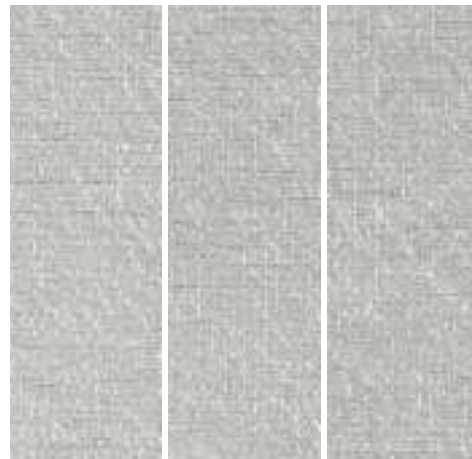
A







## Zuccherò



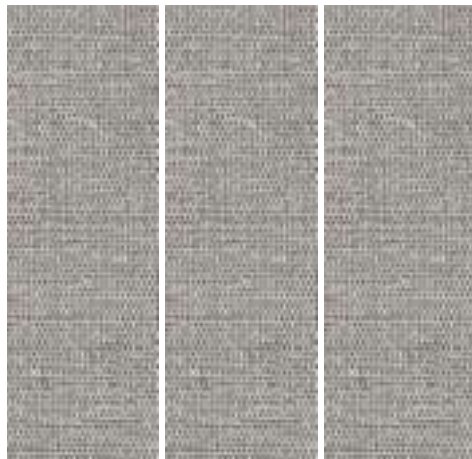
ZUCCHERO

A





## Hakata-Ori



HAKATA-ORI

A







Cobra



COBRA



## Canapa Magica



CANAPA MAGICA ANTRACITE

A

CANAPA MAGICA SABBIA

A



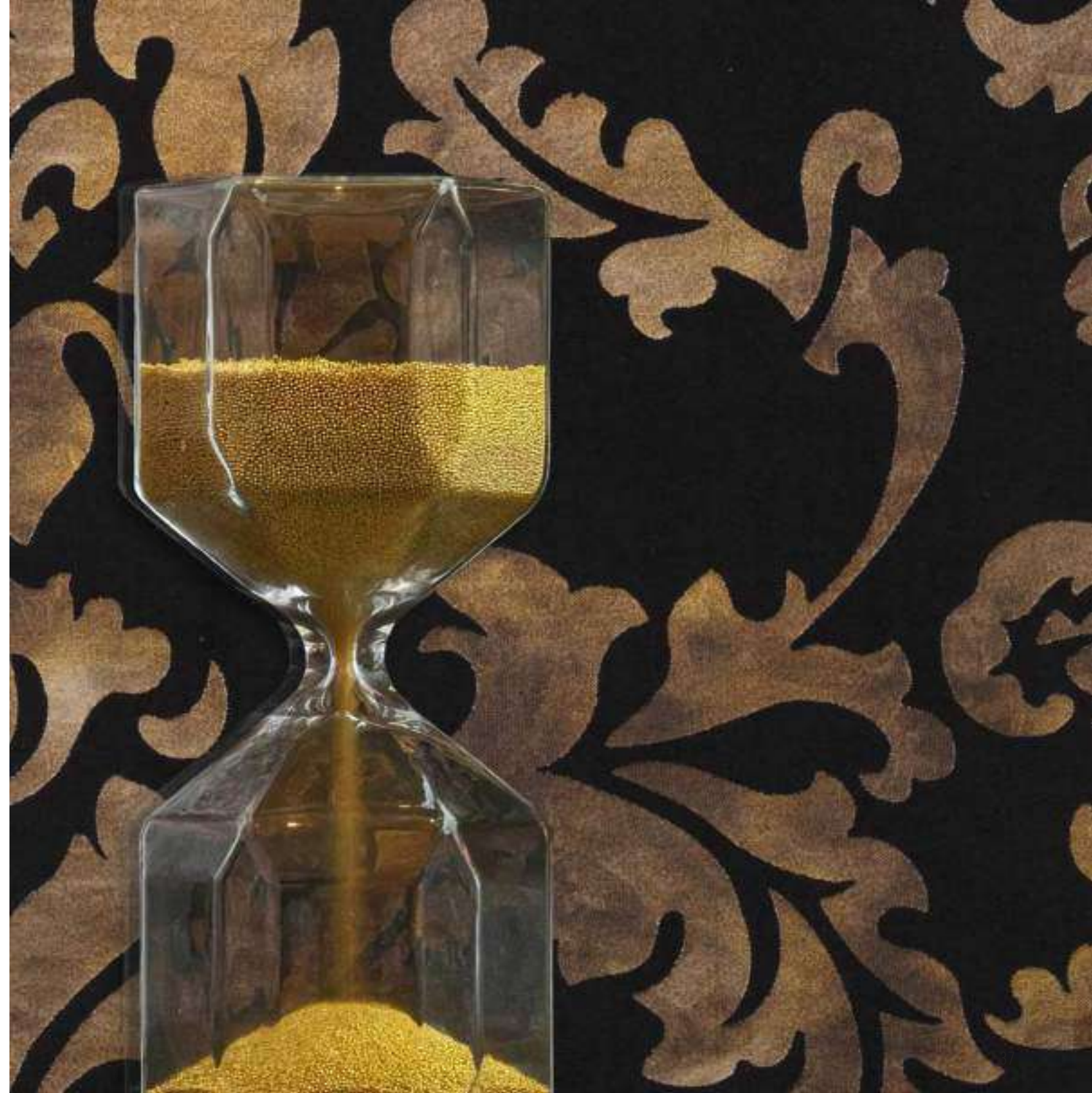


## Damascus



DAMASCUS

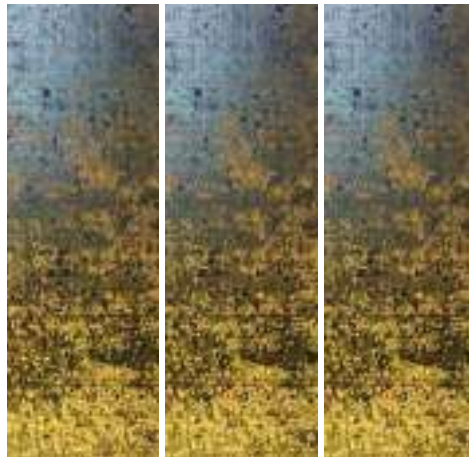
A







## Corteccia d'oro



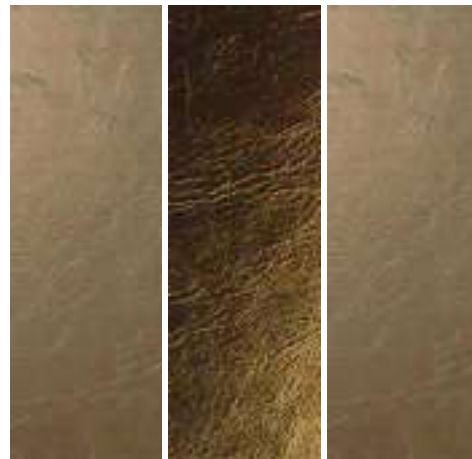
CORTECCIA D'ORO A







## Reflex



A

A









## Reflex



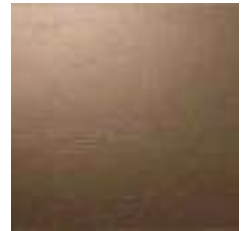
REFLEX ORO



REFLEX ORO ROSA



REFLEX RAME



REFLEX TORTORA



REFLEX ARGENTO



REFLEX SEPIA

# Solidum

Ho pensato a 84 colori esclusivi a tinta unita, proposti in diversi formati fino al 1000x3000mm, figli del ricordo di viaggi e di esperienze sensoriali: i colori, come i lineamenti, seguono i cambiamenti delle emozioni. Non bisogna avere paura dei colori; del resto il mondo è a colori, non in bianco e nero. Ogni colore è un profumo, ogni colore è una musica e non si può rinunciare ai colori, ai profumi e alla musica. Sarebbe come rinunciare alla vita stessa.

I thought of 84 exclusive solid colors, proposed up to 1000x3000mm. memory of travels and sensory experiences: colors, like features, follow changes in emotions. Don't be afraid of colors; after all the world is in color, not black and white. Each color is a perfume, each color is a music and you can't giving up colors, scents and music: it would be like give up on life itself.





028 BURRO FUSO



054 ZUCCHERO D'AVORIO







044 GOCCE DI BRINA



049 REGINA VITTORIA



001 NASOMATTO



041 POLVERE MAGICA





057 GLASSA DI COCCO



055 TALCO DOLCE



021 YUCATAN

## Solidum

001	002	003	004	005	006
007	008	009	010	011	012
013	014	015	016	017	018
019	020	021	022	023	024
025	026	027	028	029	030
031	032	033	034	035	036
037	038	039	040	041	042
043	044	045	046	047	048
049	050	051	052	053	054
055	056	057	058	059	060
061	062	063	064	065	066
067	068	069	070	071	072
073	074	075	076	077	078
079	080	081	082	083	084

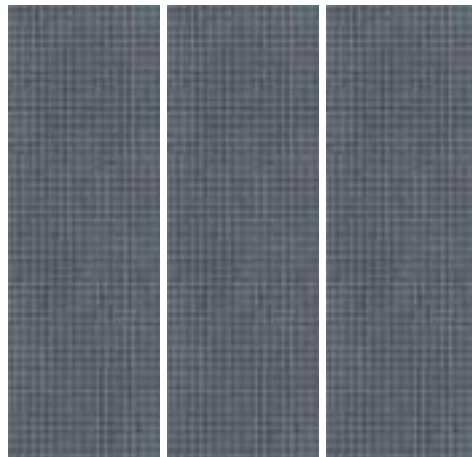
# Tactile

La superficie tridimensionale riporta ad una tradizione antica dalle trame austere ma morbide: una "comfort zone" tutta da toccare, linee pure e minimaliste su cui fare giocare la luce e immaginare nuovi riflessi. Al risveglio da questa ipnosi di gesti ripetuti, alzando lo sguardo, ci si trova di fronte ad un nuovo lessico grafico che vede nell'alternarsi delle striature i colori a tinta unita della collezione SOLIDUM.

The three-dimensional surface brings us back to an ancient tradition with austere but soft textures: a "comfort zone" to be touched, pure and minimalist lines on which to let the light play and imagine new reflections. Upon awakening from this hypnosis of repeated gestures, looking up, we find ourselves in front of a new graphic lexicon that matches alternation of streaks. With the solid colors of the SOLIDUM collection.



## Bo-Bo



A





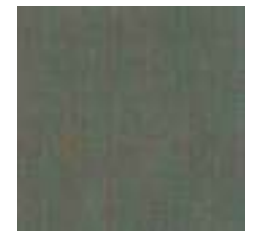
## Bo-Bo



BO-BO AVIO



BO-BO NERO ORO



BO-BO VERDE

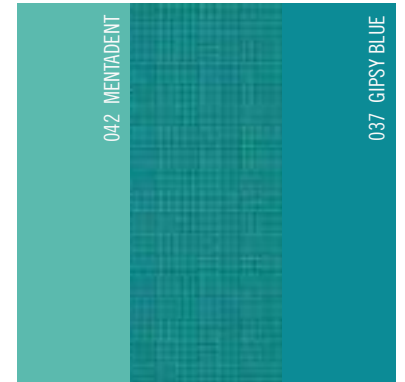




## Mash-up Bo-Bo/Solidum



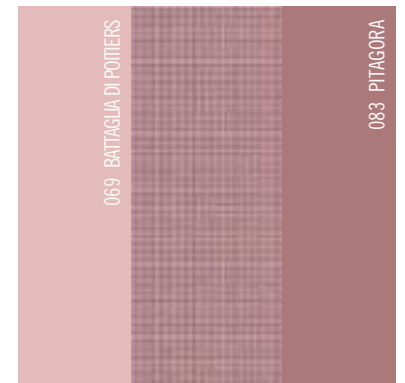
MASH-UP BO-BO 004/003



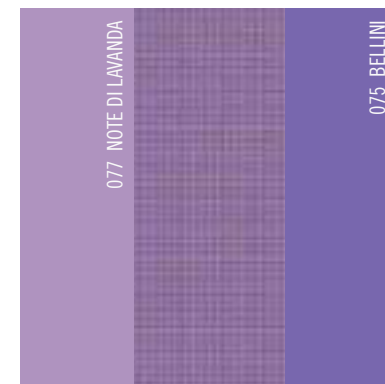
MASH-UP BO-BO 042/037



MASH-UP BO-BO 050/049



MASH-UP BO-BO 069/083



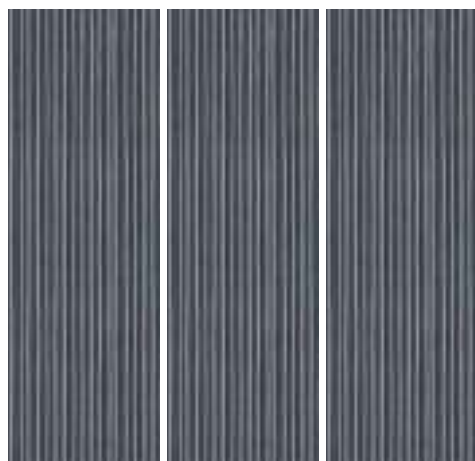
MASH-UP BO-BO 077/075



MASH-UP BO-BO WHITE/084  
MASH-UP BO-BO 084/WHITE



Unum



A





# Unum



UNUM AVIO



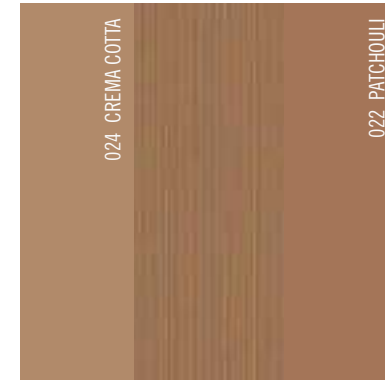
UNUM VERDE



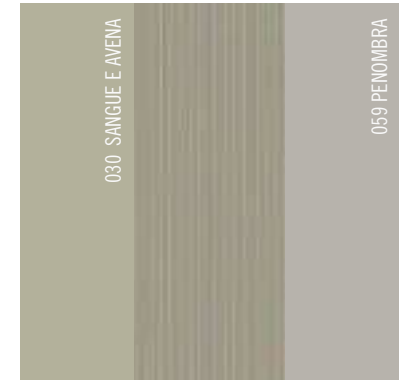
UNUM NERO ORO



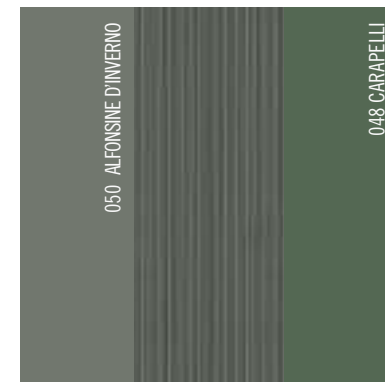
## Mash-up Unum/Solidum



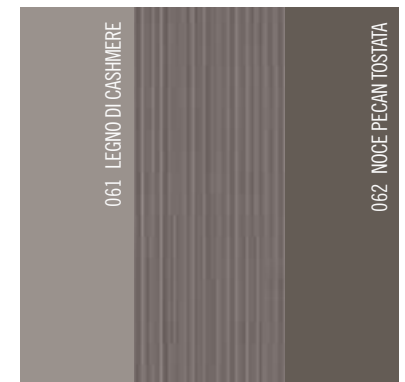
MASH-UP UNUM 024/022



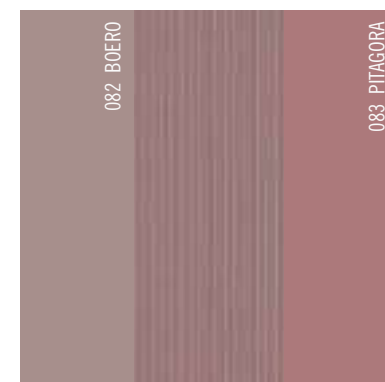
MASH-UP UNUM 030/059



MASH-UP UNUM 050/048



MASH-UP UNUM 061/062



MASH-UP UNUM 082/083



MASH-UP UNUM WHITE/084  
MASH-UP UNUM 084/WHITE

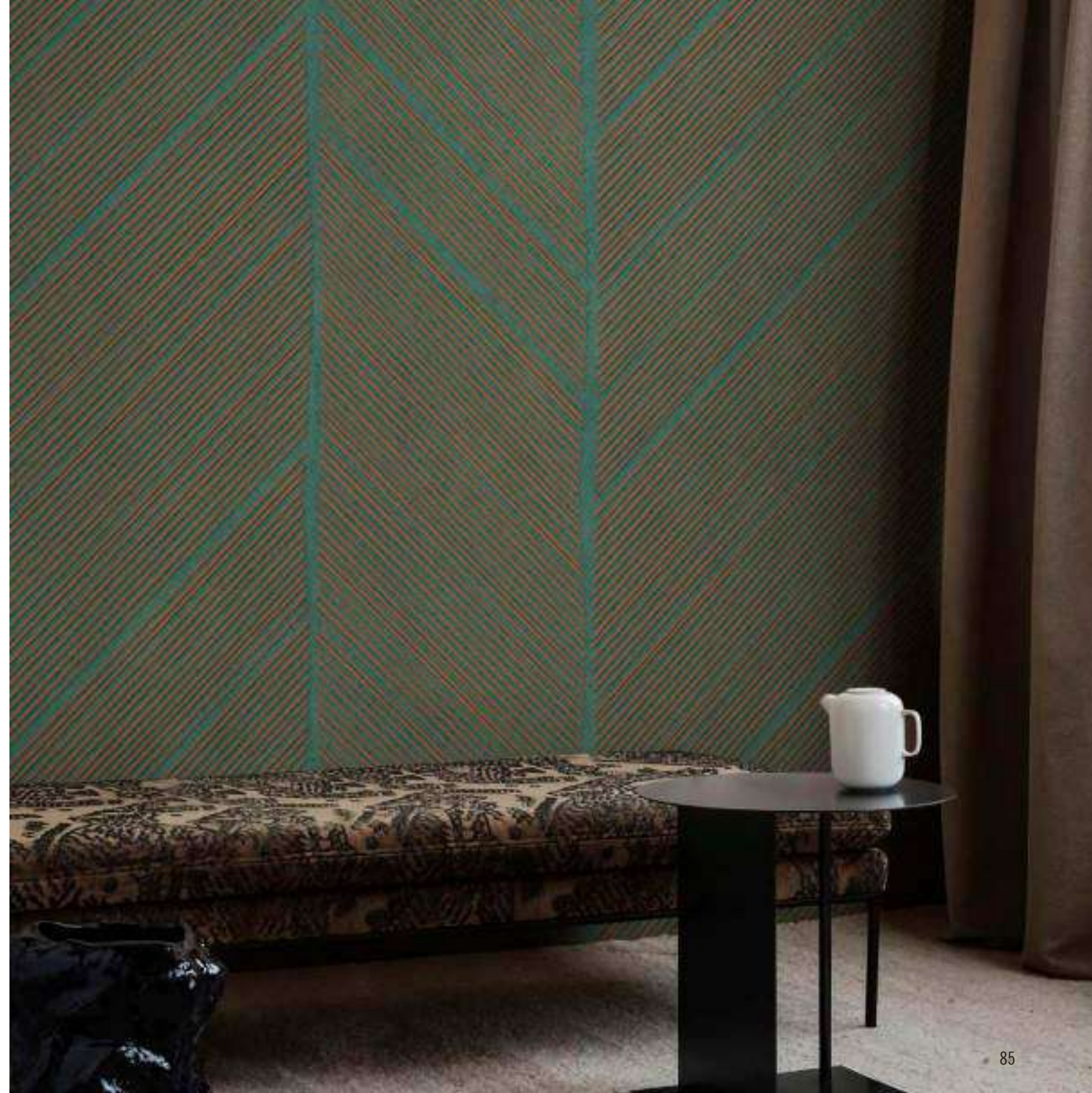




## Chevron



A





## Chevron



CHEVRON VERDE



CHEVRON AVIO



CHEVRON NERO ORO



## Mash-up Chevron/Solidum



MASH-UP CHEVRON 021/023



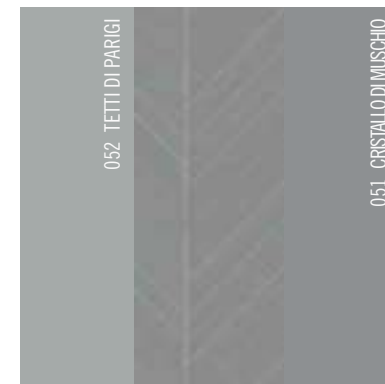
MASH-UP CHEVRON 021/024



MASH-UP CHEVRON 034/037



MASH-UP CHEVRON 048/049



MASH-UP CHEVRON 052/051



MASH-UP CHEVRON 069/082





# Fluctua



A

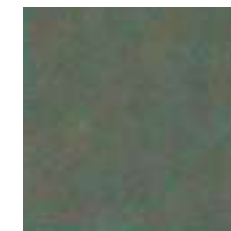
B

C





## Fluctua



FLUCTUA VERDE



FLUCTUA AVIO



FLUCTUA NERO ORO



## Interference





## Interference



INTERFERENCE NERO ORO



INTERFERENCE VERDE



INTERFERENCE AVIO

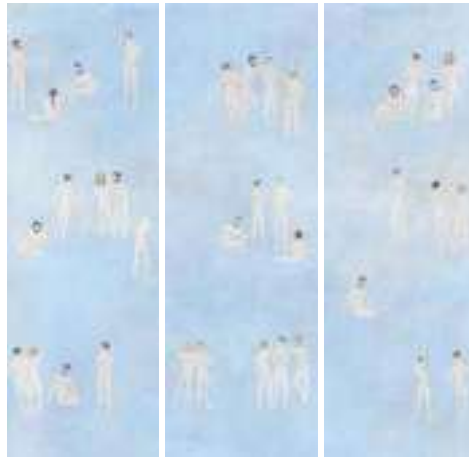
# Spirit Carnal

Siamo gusto & arte  
Siamo ragione & irrazionali  
Veleno & elisir  
Ombra & luce  
Siamo nudi e crudi  
Liberi!

We are taste & art  
We are reason & irrationals  
Poison & elixir  
Shadow & light  
We are naked and raw  
Free!



## Les Hommes



A

B

C



Les Hommes



A

B

C

LES HOMMES



Les Femmes



A

B

C

LES FEMMES





## L'Amour



A

B

C

L'AMOUR

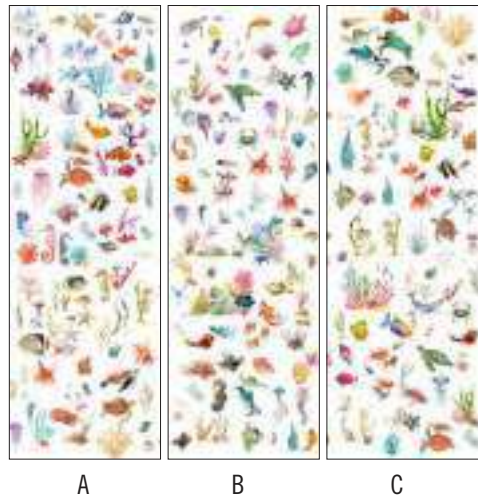
# Zio Pesce

La brezza cambia rapidamente il tempo e il cielo azzurro si carica di nuvole pesanti: arriva una tempesta tropicale, ma il mare continua il suo lavoro, sfidando la forza del vento con onde maestose mentre nelle sue profondità la vita scorre in armonia.

The breeze quickly changes the weather and the blue sky is filled with heavy clouds: a tropical storm arrives, but the sea continues its job, challenging the strength of the wind with majestic waves while life flows in harmony in its depths.



Fritto misto senza fritto



A

B

C





## Fritto misto senza fritto



FRITTO MISTO CORALLO



FRITTO MISTO AZZURRO



FRITTO MISTO ARGENTO



Tonno Insuperabile



A B C D E

TONNO INSUPERABILE



## Das techno medusa



A B C D  
DAS TECHNO MEDUSA







A B C D E

IL MARE D'INVERNO



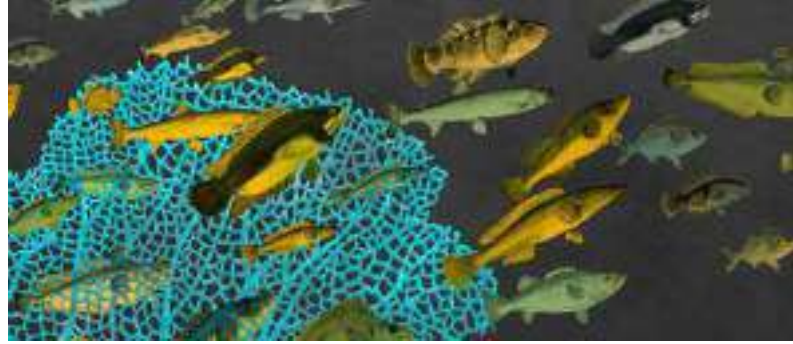


'O mar for

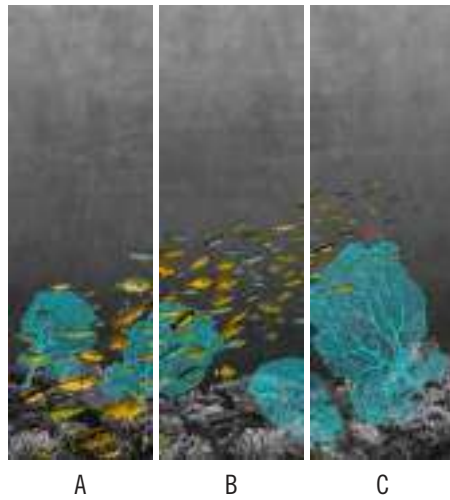


A B C D E

'O MAR FOR

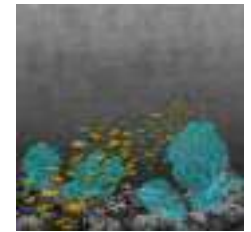


## Findus





## Findus



FINDUS PINNA GIALLA



FINDUS MARE BLU



FINDUS MULTICOLOR



FINDUS GRISSINO

# I. Carthusia et...

La natura decora la terra ed è in assoluto la migliore fonte di ispirazione: racconti di viaggio in jungle tropicali, dei giardini di Capri, dei rampicanti delle ville del Palladio, dell'albero cinese del ventaglio, del delta del Nilo...

Nature decorates Earth and it's by far the best source of inspiration: storytelling of travels in tropical jungles, gardens of Capri, vines Palladio's villas, chinese fan-tree, delta of the Nile...



# Orphea



A

B

C

D







## Orpheo



ORPHEO NERO



ORPHEO ROSA



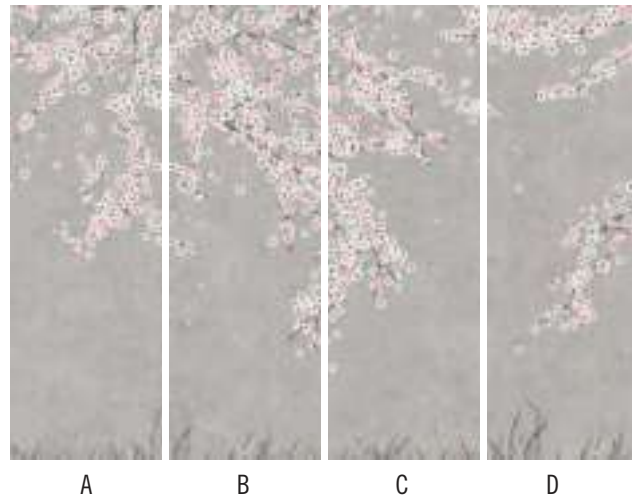
ORPHEO BEIGE



ORPHEO AZZURRO



## Tokyo Bloom









## Tokyo Bloom



TOKYO BLOOM GRIGIO



TOKYO BLOOM VERDE



TOKYO BLOOM GRAFITE



## Jingu



A

B

C

D





## Jingu



JINGU AMBRA



JINGU ROSA



JINGU TURCHESE



# Helix



HELIX BICOLOR



HELIX VERDE

A

B

C

D





RECEPTION



## Coccobello



A

B

C

D

E





Coccobello



COCCOBELLO SABBIA



COCCOBELLO VERDE

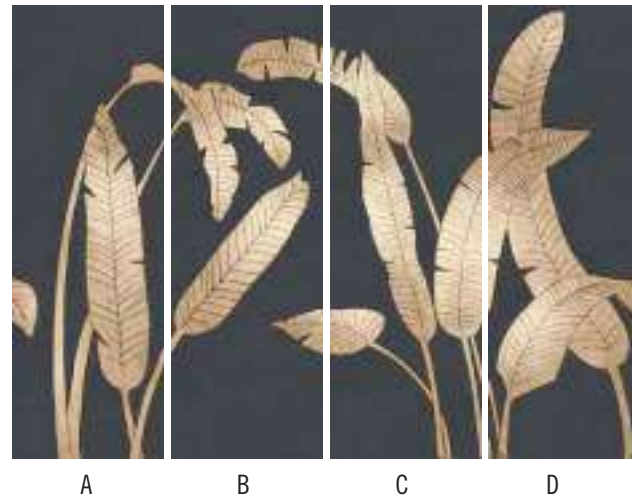


COCCOBELLO SMERALDO





## Brezza di seta



A

B

C

D



## Brezza di seta



BREZZA DI SETA CARBONE



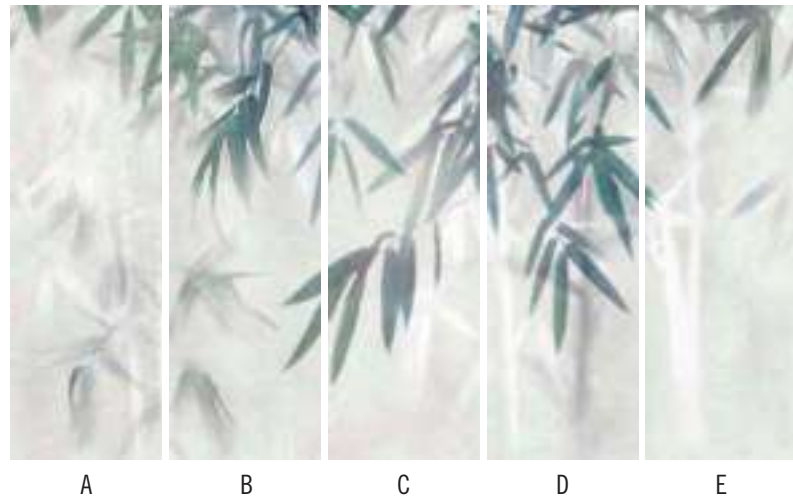
BREZZA DI SETA SABBIA



BREZZA DI SETA TERRA



## Aurus Nobilis







## Aurus Nobilis



AURUS NOBILIS OLIVA



AURUS NOBILIS MENTA



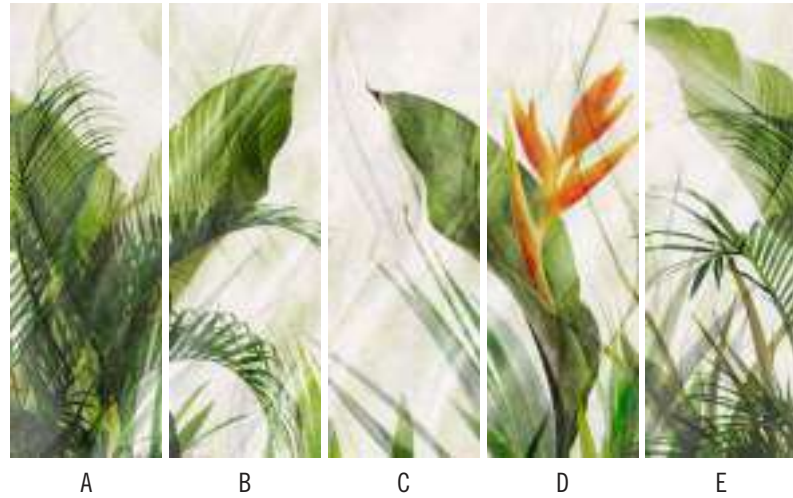
AURUS NOBILIS GRAFITE



AURUS NOBILIS SEPIA



## Plantago





## Plantago



PLANTAGO VERDE



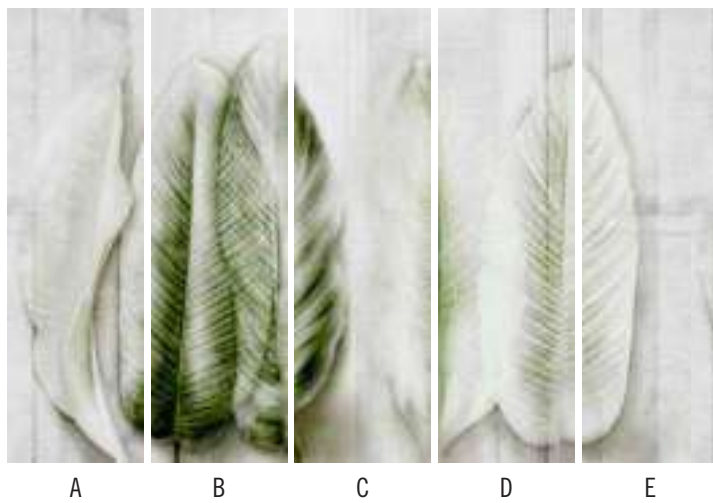
PLANTAGO SMERALDO



PLANTAGO SEPIA



## Kedu



A

B

C

D

E







## Kedu



KEDU SALVIA



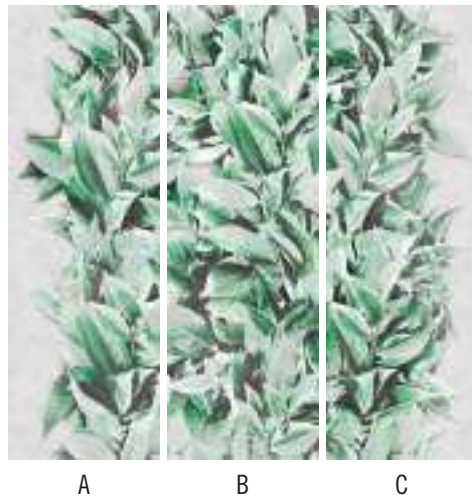
KEDU SEPPIA



KEDU AVIO



## Nudiflorum







## Nudiflorum



NUDIFLORUM BICOLORE



NUDIFLORUM VERDE



NUDIFLORUM GESSO



## Daintree



A

B

C

D





Daintree



DAINTREE GRIGIO



DAINTREE SEPIA



DAINTREE NERO



DAINTREE COBALTO



## Fiori di Grazia



A

B

C





## Fiori di Grazia



FIORI DI GRAZIE VERDE



FIORI DI GRAZIE BORDEAUX



FIORI DI GRAZIE VIOLA





## Clorophilla



A B C D E  
CLOROPHILLA



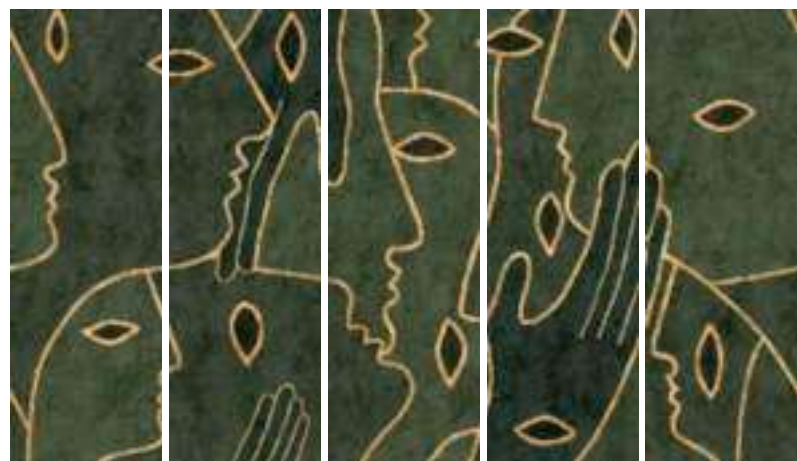
# Libera-mente insolente

Tutto ciò che ti rende insolente, fragile, feroce, intelligente, potente, ferito, creativo, riflessivo, lunatico, spirituale, selvaggio, libero può essere descritto in una sola parola: arte.

All that makes you insolent, fragile and fierce and clever and powerful and wounded and creative and thoughtful and moody and spiritual and wild and free, can be described in one single word: art.



## Libera-mente



A

B

C

D

E





## Libera-mente



LIBERA-MENTE VERDE



LIBERA-MENTE TURCHESE



LIBERA-MENTE BLU



## Folium



A





## Folium



FOLIUM LILLA



FOLIUM AVORIO



FOLIUM PERLA



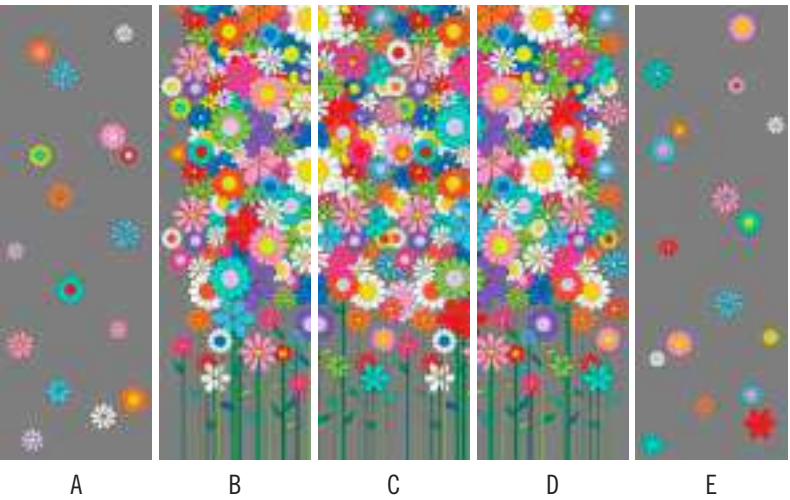
FOLIUM AVIO



FOLIUM ANTRACITE



# Euphoria





Euphoria



EUPHORIA GRIGIO



EUPHORIA LIGHT



EUPHORIA MULTICOLOR



EUPHORIA ANTRACITE





## Decadence



A

B

C

D

E





## Decadence



DECADENCE NERO



DECADENCE TERRA



DECADENCE BLU



DECADENCE ROSA



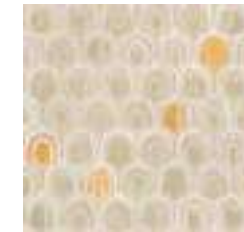
# Tulum



A



## Tulum



TULUM SABBIA



TULUM VERDE



TULUM AVIO



Mmmm...



A

B

C





Mmmm...



Mmmm... CICLAMINO



Mmmm... ROSSO



Mmmm... FUXIA



Mmmm... ORANGE



## Dear Polly



A





## Dear Polly



DEAR POLLY NAVY



DEAR POLLY CREMA



DEAR POLLY SALVIA



DEAR POLLY LIME



DEAR POLLY PESCA

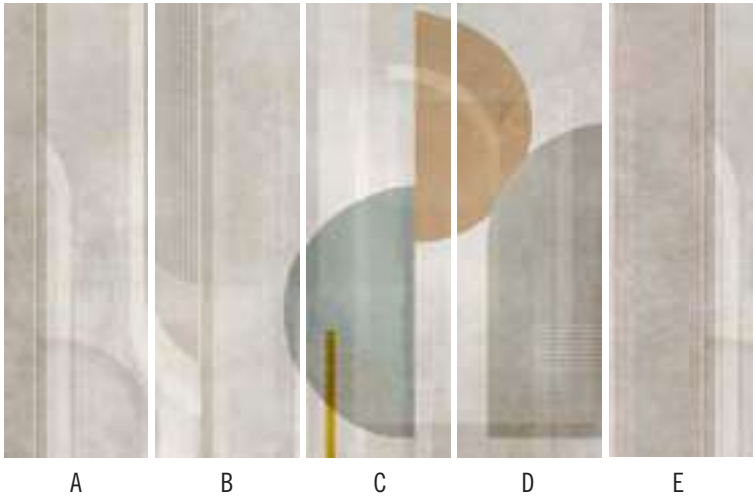


DEAR POLLY MULTICOLOR





# Decibel





Decibel



DECIBEL OCRA



DECIBEL VIOLA



DECIBEL PETROLIO

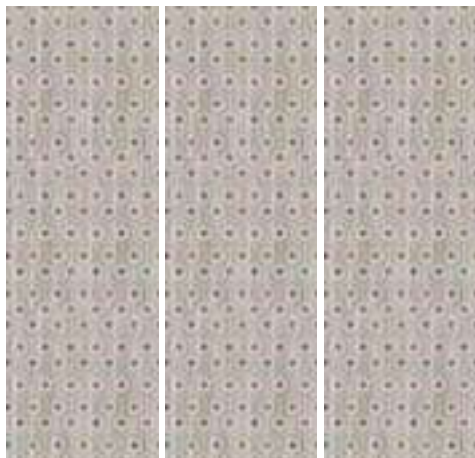
# Sequenze

Dal micro al macro: trame ripetute, pattern che rappresentano forme impossibili, apparentemente semplici, che si ripetono all' infinito e ne generano una forma più complessa, più assoluta, più nobile.

From micro to macro: repeated textures, patterns that represent impossible shapes, apparently simple, which repeat themselves endlessly and generate a more complex, more absolute shape.



## Geometrical Peacock



A





CAFE

## Geometrical Peacock



GEOMETRICAL P. PERLA



GEOMETRICAL P. CORALLO



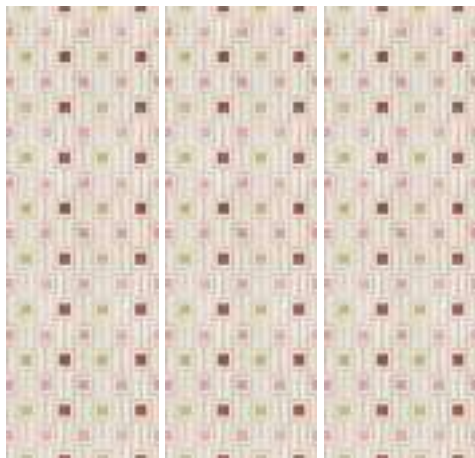
GEOMETRICAL P. PAVONE



GEOMETRICAL P. NERO



## Theorema



A





## Theorema



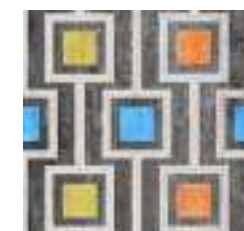
THEOREMA ROSA ORO



THEOREMA AZZURRO



THEOREMA BEIGE

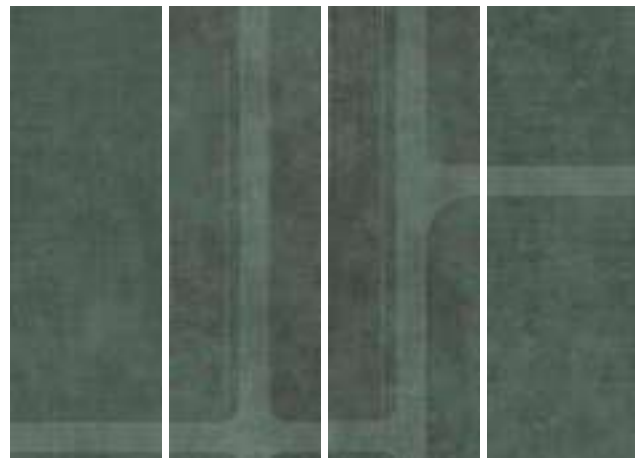


THEOREMA ANTRACITE





# Tube



A

B

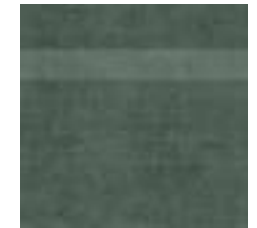
C

D

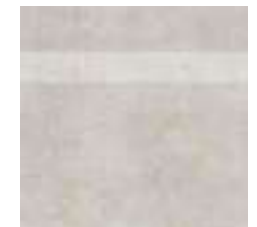




## Tube



TUBE ANTRACITE



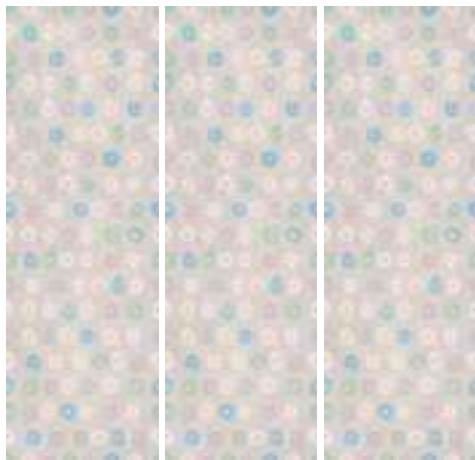
TUBE SABBIA



TUBE GRIGIO



## Bubble-Bobble



A





## Bubble-Bobble



BUBBLE-BOBBLE LIGHT



BUBBLE-BOBBLE VERDE



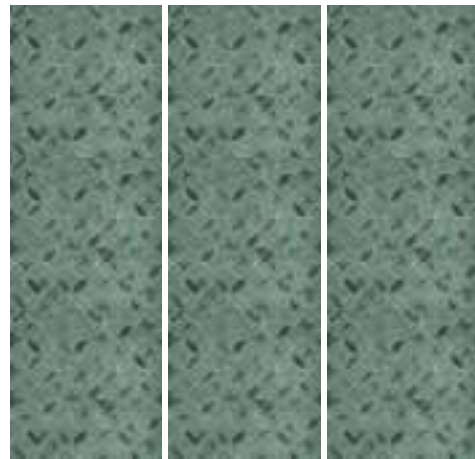
BUBBLE-BOBBLE CIPRIA



BUBBLE-BOBBLE DENIM



Memo

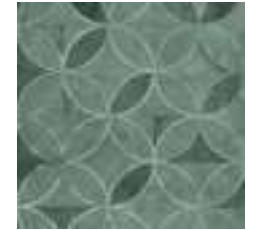


A





## Memo



MEMO ANTRACITE



MEMO GRIGIO



MEMO BEIGE



## Relique



RELIQUE

A



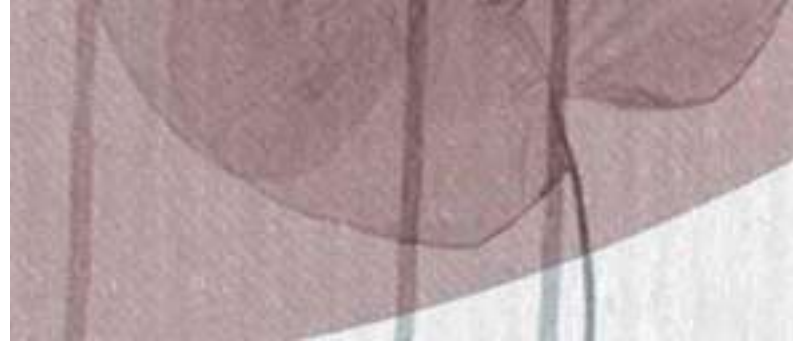




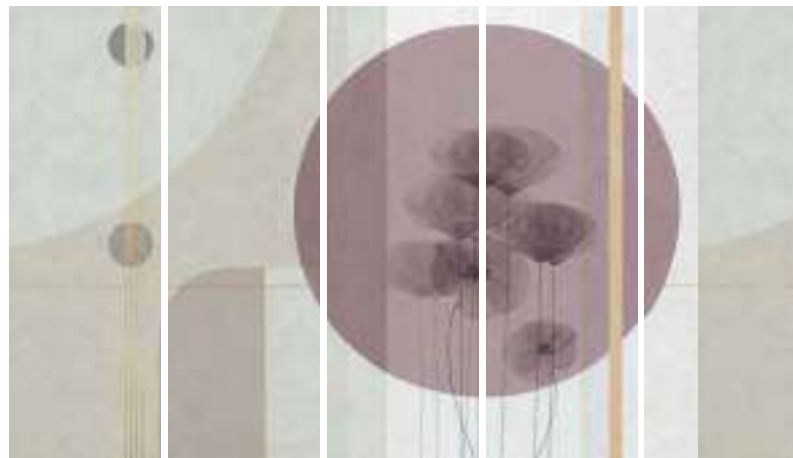
...embrassant les ombres

Una rivela, l'altra nasconde: la luce e l'ombra sono i lati opposti della medesima cosa e quando l'ombra dilegua e se ne va, la luce si accende diventa ombra per altra luce.

One reveals, the other hides: light and shadow are opposite sides of the same thing and when, the shadow fades and goes away, the light that comes on becomes a shadow for other lighth.



Lo sai che i papaveri...



A

B

C

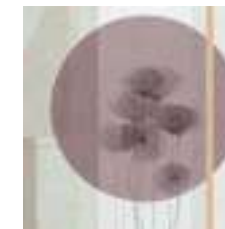
D

E





Lo sai che i papaveri...



LO SAI CHE... PRUGNA



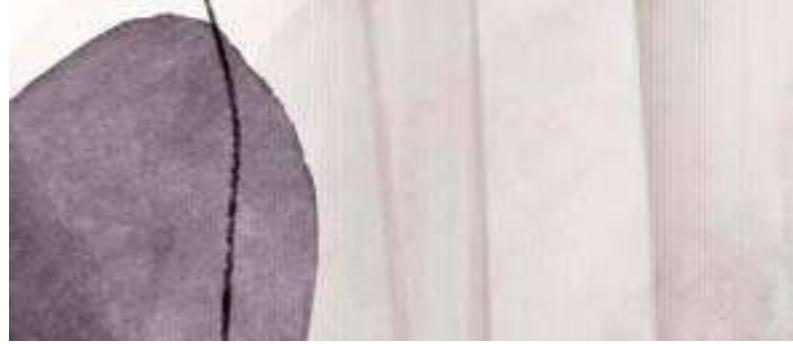
LO SAI CHE.. LILLA



LO SAI CHE...GRIGIO



LO SAI CHE... ROSA



## Eclipse



A

B

C

D

E





## Eclipse



ECLIPSE PRUGNA-VIOLA



ECLIPSE OCRA-TERRA



ECLIPSE AVIO-VERDE



## Cacatua



A

B

C

D





## Cacatua



CACATUA ROSA



CACATUA SEPPIA



CACATUA AVORIO



CACATUA BLU NOTTE



## En passant



A

B

C

D

E

F









En passant



EN PASSANT AVORIO



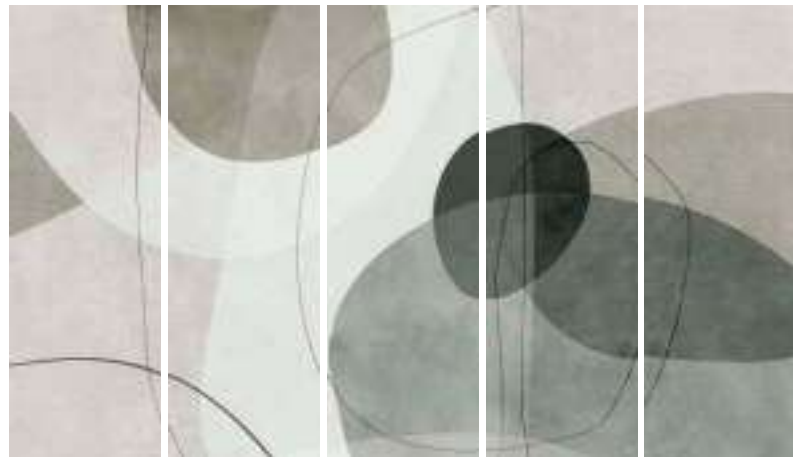
EN PASSANT AZZURRO



EN PASSANT GREIGE



## Substance



A

B

C

D

E





## Substance



SUBSTANCE CENERE



SUBSTANCE SABBIA



SUBSTANCE ROSATO



Initial



A

B

C

D

E





Initial



INITIAL SABBIA



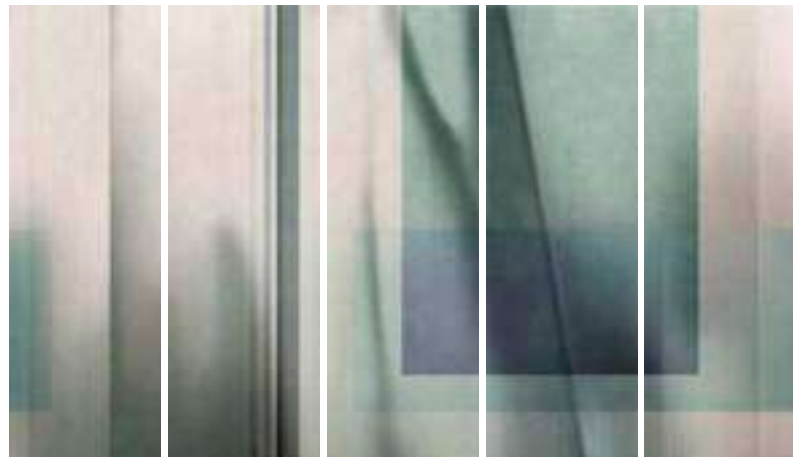
INITIAL ROSATO



INITIAL CENERE



## Cadenza



A

B

C

D

E





## Cadenza



CADENZA BLU



CADENZA TERRA



CADENZA VERDE



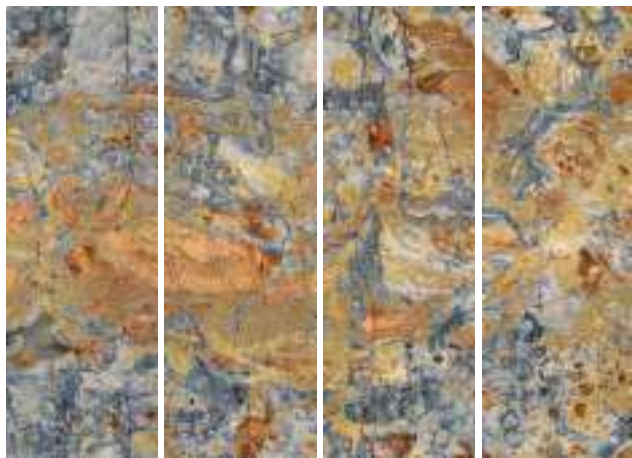
# Perfect imperfection

Un frammento del flusso della vita, il battito del cuore delle epoche, la pelle del nostro pianeta: la pietra naturale, perfetta nelle sue peculiarità, è asimmetrica, grezza, irregolare, unica e straordinaria.

A fragment of the flow of life, the heartbeat of the ages, the skin of our planet: natural stone, perfect in its peculiarities, is asymmetrical, rough, irregular, unique and extraordinary.



## Porta del Cielo



A

B

C

D







## Porta del Cielo



PORTA DEL CIELO OCRA



PORTA DEL CIELO OTTANIO



PORTA DEL CIELO COTTO



PORTA DEL CIELO SENAPE



# Agave



A





## Agave



AGAVE PERLA



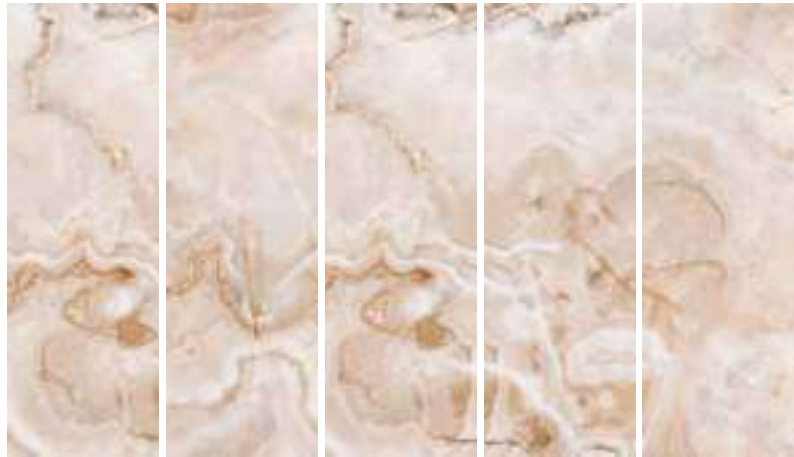
AGAVE OCEANO



AGAVE VERDE



Madagascar



A B C D E





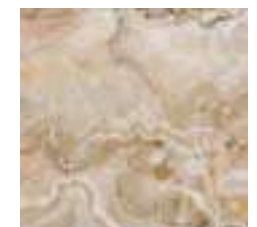
## Madagascar



MADAGASCAR ROSA



MADAGASCAR SABBIA



MADAGASCAR TERRA

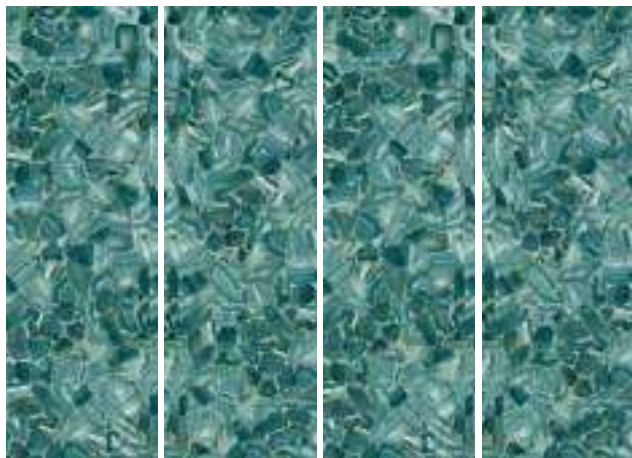


MADAGASCAR COBALTO





## Talismano

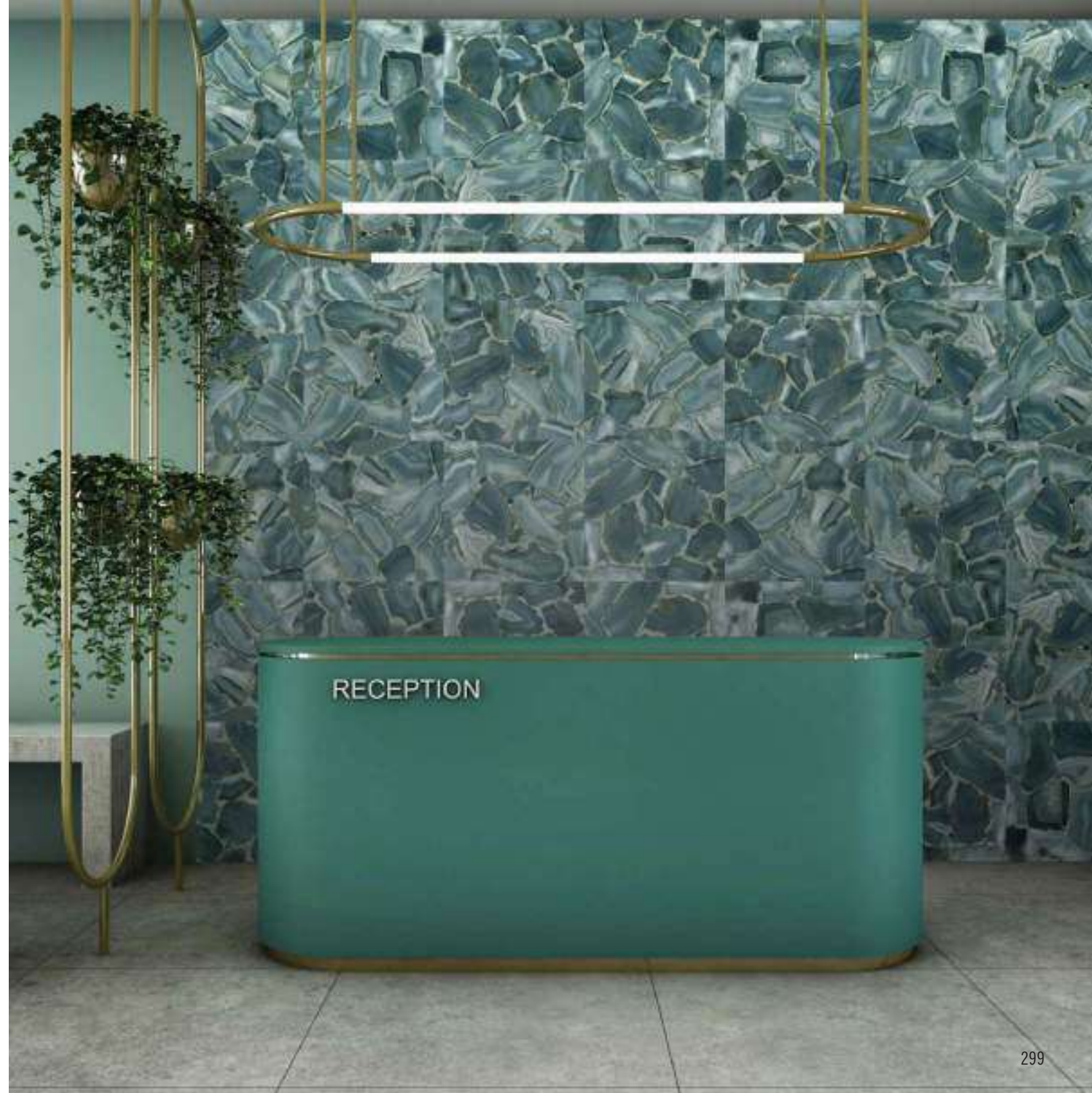


A

B

C

D





Talismano



TALISMANO ACQUAMARINA



TALISMANO BLU



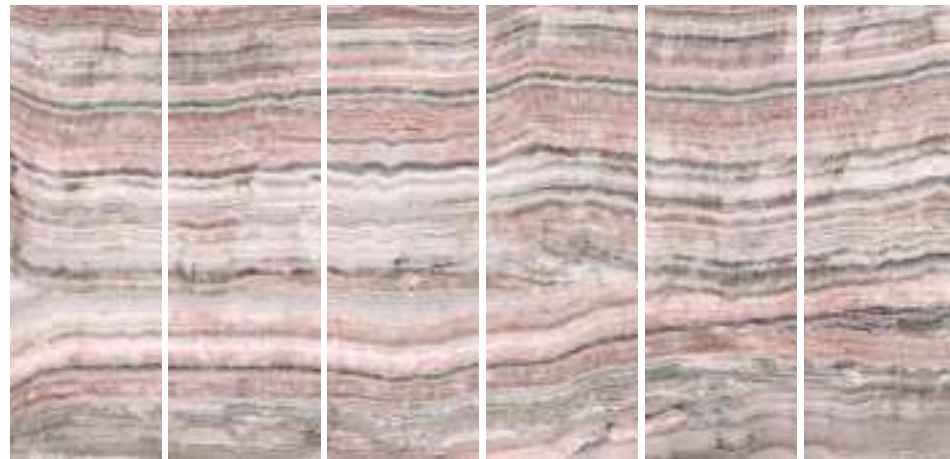
TALISMANO VIOLA



TALISMANO NOCCIOLA



## Vanilla Vibes



A

B

C

D

E

F





## Vanilla Vibes



VANILLA VIBES ROSA



VANILLA VIBES AVORIO



VANILLA VIBES OCRA



VANILLA VIBES BLU



## Bi-Frost



A

B

C

D

E

F

G





## Bi-Frost



BI-FROST ORO



BI-FROST CIELO



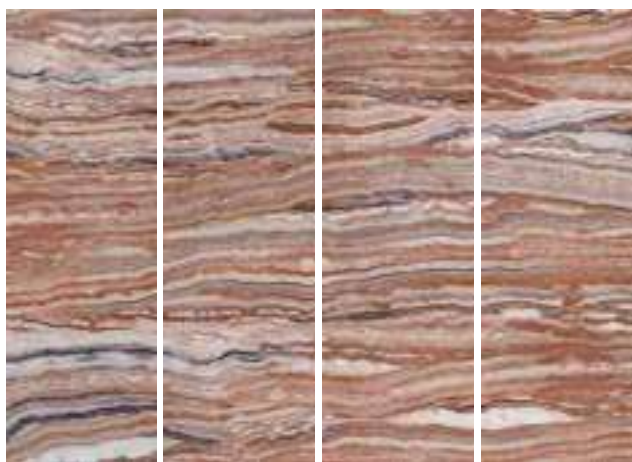
BI-FROST TERRA



BI-FROST SMERALDO



## Stratos



A

B

C

D





## Stratos



STRATOS ROSA



STRATOS OCRA

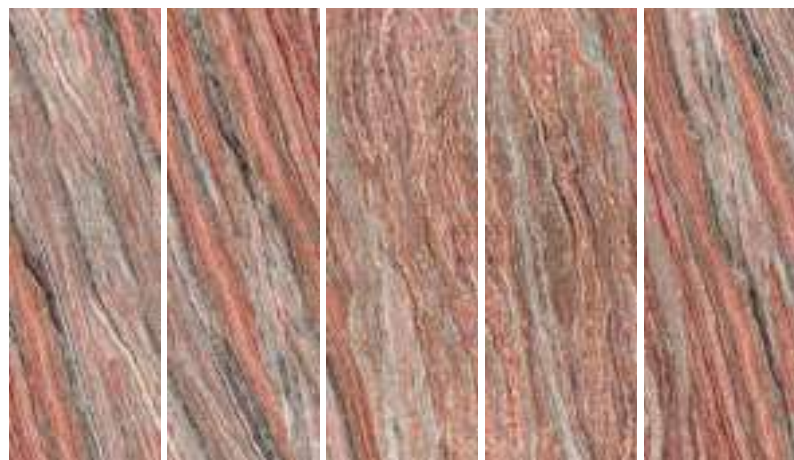


STRATOS TURCHESE





## Ortigia



A

B

C

D

E





## Ortigia



ORTIGIA ROSA



ORTIGIA FORESTA



ORTIGIA BLU

[whiteprizm.co.uk](http://whiteprizm.co.uk)