

# Oxide

METALLIC FEEL

OXIDE è la superficie dalla spiccata personalità "industrial" che sorprende per il realismo con cui riproduce le sensazioni tattili e visive dei metalli ossidati, a partire dalle sfumature cangianti di colore, fino ai riflessi lucido-opachi, che danno al prodotto una connotazione quasi tridimensionale.

Una gamma composta da 5 diverse colorazioni, ciascuna pensata per creare spazi dal carattere non convenzionale e sperimentare con abbinamenti inediti e materiali a contrasto.

OXIDE is the surface with a distinctive "industrial" identity surprising for the realism of the tactile and visual sensations of the oxidized metals reproduced. This effect is given by shimmering shades of colour and glossy-matt reflections which give to the product an almost three-dimensional connotation.

Oxide is a range of 5 different colours; each colour is designed to create spaces with an unconventional feature.

Oxide is suitable for experimentations with unusual matchings of contrasting materials.



# Oxide

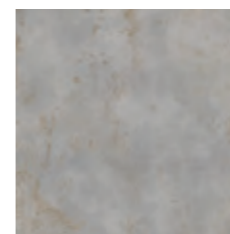
**GRES PORCELLANATO MASSA COLORATA**  
FULLBODY PORCELAIN STONEWARE

**2 SUPERFICI NATURALI . 2 NATURAL SURFACES**  
R10 - R11

**3 SPESSORI . 3 THICKNESSES**  
6 - 8,5 - 20 MM

**4 FORMATI . 4 SIZES**  
120x280 48"x110" . 120x120 48"x48" . 60x120 24"x48" . 80x80 32"x32"

**5 COLORI . 5 COLORS**



ALUMINUM



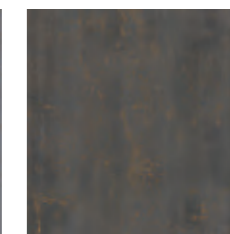
BRASS



GREEN



STEEL



IRON



ALUMINUM 120x120



Aluminum



FLOOR: ALUMINIUM 120x120 - JUST CODE BEIGE 20x120 | WALL: BRASS 120x280 | FURNITURE: ALUMINIUM



FLOOR: ALUMINUM 120x120 | WALL: BRASS 120x280 | FURNITURE: BRASS



FLOOR: ALUMINUM 120x120 - MAKE GRIGIO CORTEN 100x100 | WALL: ALUMINUM 60x120 | MAKE: CEMENTINE CORTEN MIX 20x20



BRASS 120x120



**Brass**







GREEN 120x120



Green



FLOOR: GREEN 120x120 | WALL: GREEN 120x280 | LA MARMOTECA CALACATTA ELEGANCE LUX 120x280

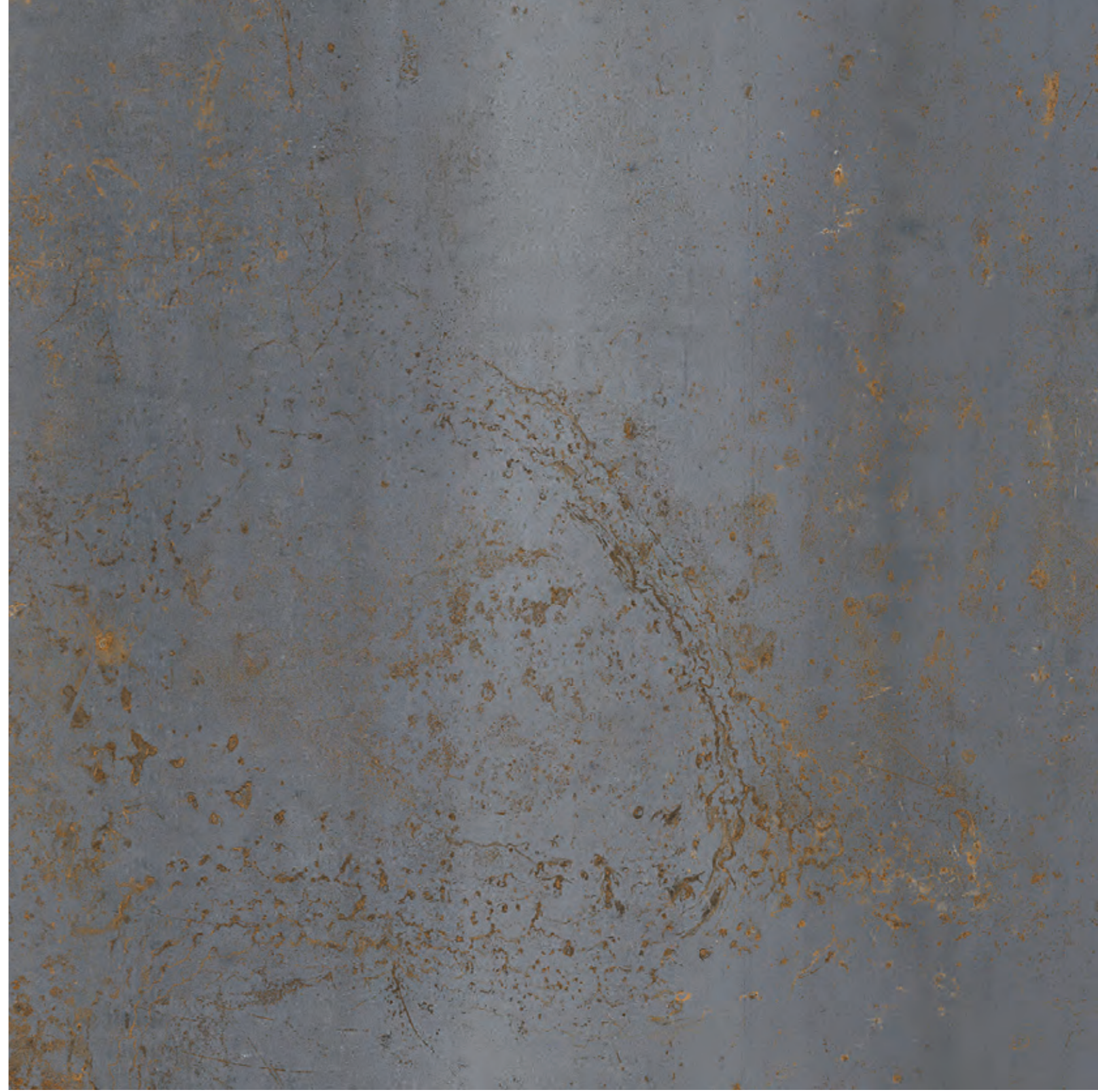


FLOOR: MIX GREEN 20x120 | WALL: GREEN 120x280 | OUTDOOR: GREEN 80x80 R11



STEEL 120x120

18



**Steel**

19



FLOOR: IRON 120x120  
WALL: STEEL 60x120 - MIX IRON/STEEL 20x120



IRON 120x120

22



23

Iron



FLOOR: IRON 120x120 | WALL: GIOIA MARTINICA 60x120 | OUTDOOR: GREEN 80x80 R11

# Aluminum

# Brass

120x280	G69300	F 93,50
120x120	G69310	F 72,50
60x120	G69320	F 54,50
80x80	G0069330	F 52,50
80x80 R11 8,5MM	G0069340	F 54,50
80x80 R11 20MM	G0069350	F 82,90

120x280	G69304	F 93,50
120x120	G69314	F 72,50
60x120	G69324	F 54,50
80x80	G0069334	F 52,50

# Green

# Steel

120x280	G69303	F 93,50
120x120	G69313	F 72,50
60x120	G69323	F 54,50
80x80	G0069333	F 52,50
80x80 R11 8,5MM	G0069343	F 54,50
80x80 R11 20MM	G0069353	F 82,90

120x280	G69301	F 93,50
120x120	G69311	F 72,50
60x120	G69321	F 54,50
80x80	G0069331	F 52,50



# Iron

120x280	G69302	F 93,50
120x120	G69312	F 72,50
60x120	G69322	F 54,50
80x80	G69332	F 52,50
80x80 R11 8,5MM	G69342	F 54,50
80x80 R11 20MM	G69352	F 82,90

## 3D tech

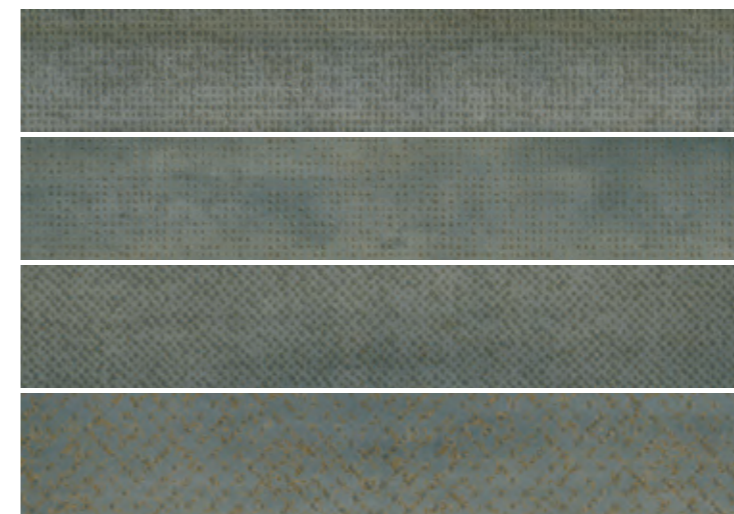
WALL | FLOOR

**3D Tech** è la nuova tecnologia che consente di applicare differenti materie ceramiche, anche a spessore, in perfetta corrispondenza con la grafica sottostante, realizzata in digitale ad altissima definizione. Un processo produttivo rivoluzionario, che combina la matericità con l'estetica del prodotto, fino ad ottenere superfici dallo straordinario valore sensoriale.

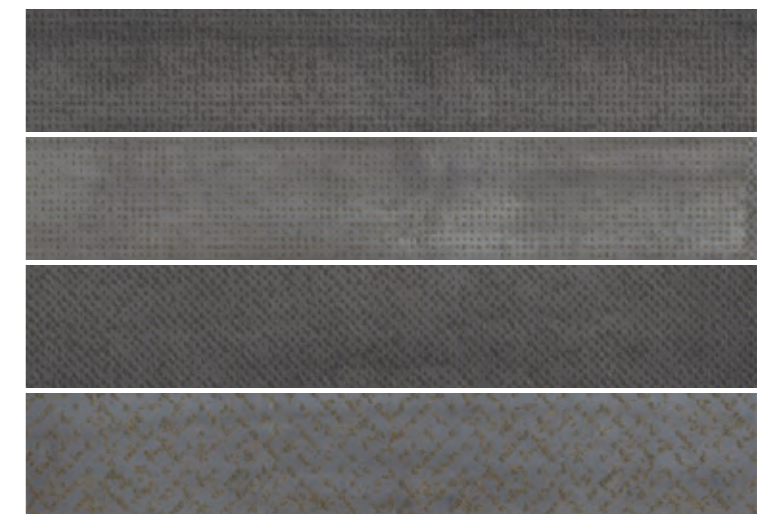
**3D Tech** is the new technology able to apply different ceramic materials, even within thickness, integrating them perfectly with the underlying graphics, made using high-definition digital technology. A revolutionary production process that combines the textures with the aesthetics of the product, resulting in surfaces of outstanding sensory value.



G69361 MIX BRASS 20x120  
F 70,50



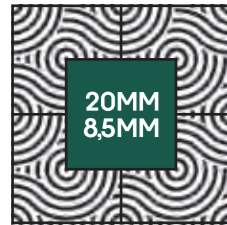
G69362 MIX GREEN 20x120  
F 70,50



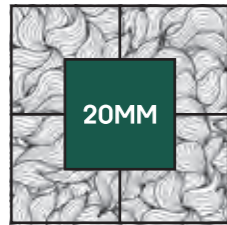
G69360 MIX IRON STEEL 20x120  
F 70,50

# Outdoor 20MM 8,5MM

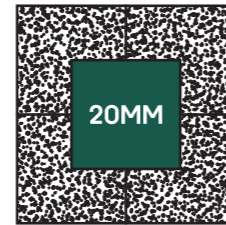
## SOLUZIONI DI POSA . LAYING SCHEMES



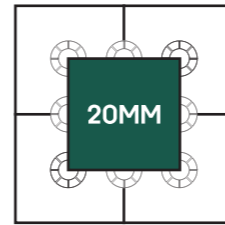
POSA A COLLA SU MASSETTO  
Laying on screed with adhesive



POSA A SECCO SU ERBA  
Dry laying on grass



POSA A SECCO SU GHIAIA O SABBIA  
Installation on gravel or sand



POSA SOPRAELEVATA  
Raised pedestal system

## RESISTENZA E SICUREZZA . STRENGTH AND SAFETY



GIARDINI  
Gardens



TERRAZZE  
Patios and terrace



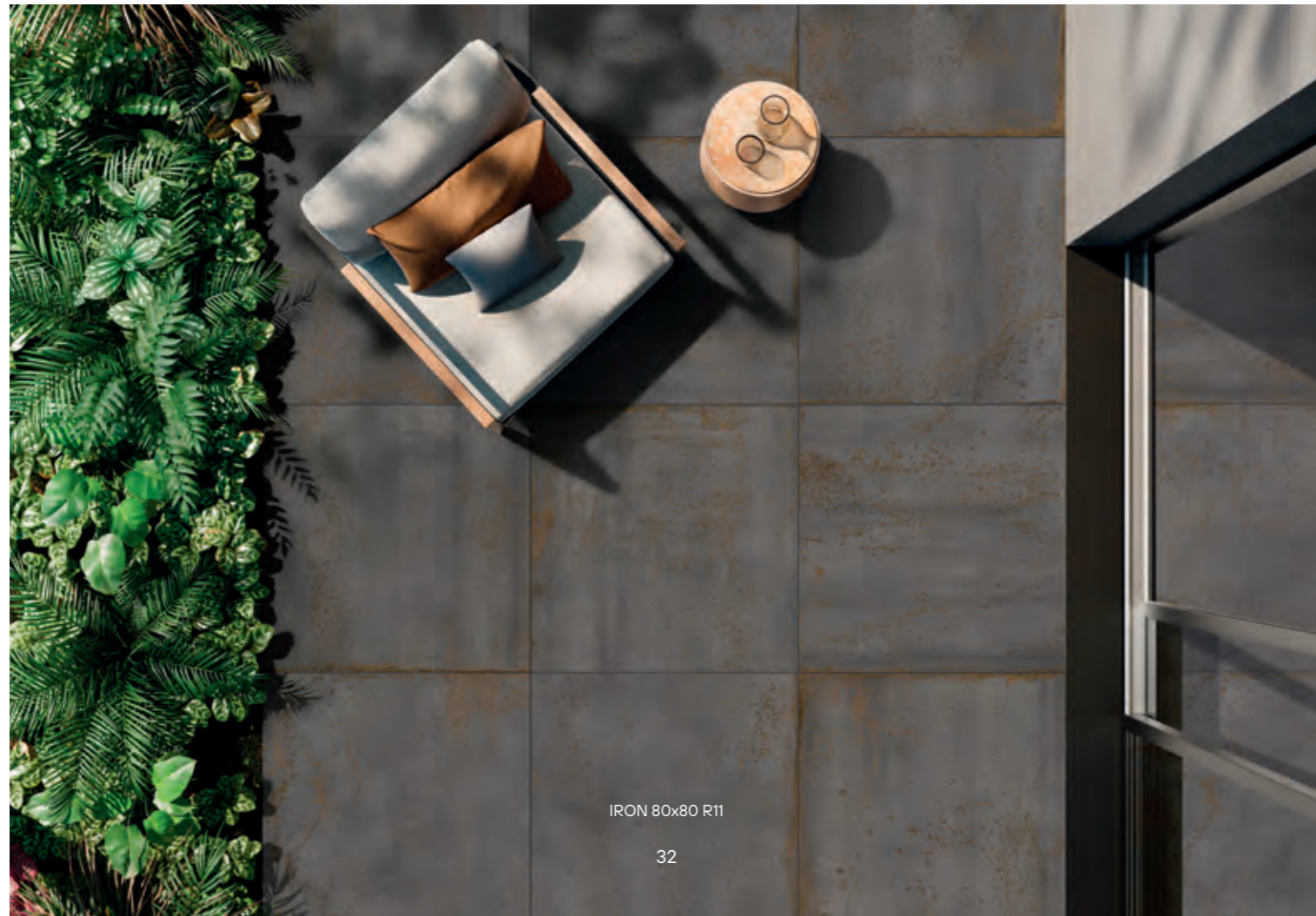
ARREDO URBANO  
Street furnishing



PISCINE E ZONE BALNEARI  
Swimming-pools and bathing areas



BAR E RISTORANTI  
Bars and restaurants

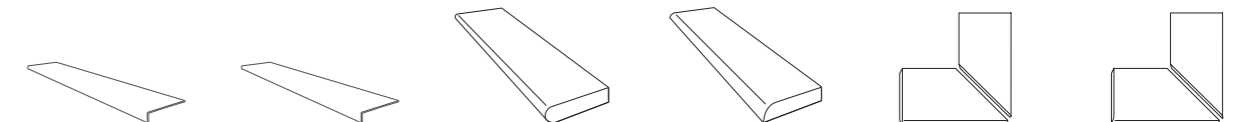


IRON 80x80 R11



GREEN 80x80 R11 - 20MM

## PEZZI SPECIALI . SPECIAL TRIMS



ELEMENTO  
AD "L"  
80x32x4

ELEMENTO  
AD "L"  
80x32x4

GRADONE BORDO  
ARROTONDATO  
80x40

GRADONE  
BECCO CIVETTA  
80x40

ANGOLARE BORDO  
ARROTONDATO (KIT DX/SX)  
160x40

ANGOLARE BECCO  
CIVETTA (KIT DX/SX)  
160x40

OUTDOOR  
R11 8,5 MM

OUTDOOR  
20 MM

OUTDOOR  
20 MM

OUTDOOR  
20 MM

OUTDOOR  
20 MM

OUTDOOR  
20 MM

ALUMINUM

G0069400

G0069410

G0069420

G0069430

G0069440

G0069450

IRON

G0069402

G0069412

G0069422

G0069432

G0069442

G0069452

GREEN

G0069403

G0069413

G0069423

G0069433

G0069443

G0069453

PRICE LIST €

PZ 102,90

PZ 209,90

PZ 135,50

PZ 135,50

PZ 316,90

PZ 316,90

PEZZI SPECIALI . SPECIAL TRIMS











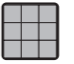
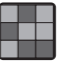
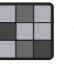

			
	BATTISCOPA MOLATO 5,5x120	GRADONE 120x32x4	GRADONE ANGOLARE 120x32x4
 ALUMINUM	GML69320	G0069370	G0069380 SX G0069390 DX
 STEEL	GML69321	G0069371	G0069381 SX G0069391 DX
 IRON	GML69322	G0069372	G0069382 SX G0069392 DX
 GREEN	GML69323	G0069373	G0069383 SX G0069393 DX
 BRASS	GML69324	G0069374	G0069384 SX G0069394 DX
PRICE LIST €	PZ 20,50	PZ 196,50	PZ 225,90

IMBALLI . PACKING

FORMATO SIZE	SPESSORE THICKNESS	PZ/SCAT. PCS/BOX	MQ/SCAT. SQM/BOXT	KG/SCAT. KG/BOX	SCAT./PAL BOX/PAL	MQ/PAL SQM/PAL	KG/PAL
120x280	6 mm	2	67,20		18	120,96	
120x120	8,5 mm	2	2,88	57,60	18	51,84	1.077
60x120	8,5 mm	2	1,44	29,52	26	37,44	767
80x80	8,5 mm	2	1,28	25,60	44	56,32	1.146
80x80 R11 8,5MM	8,5 mm	2	1,28	25,60	44	56,32	1.146
80x80 R11 20MM	20 mm	1	0,64	30,72	40	25,60	1.249
DECORO MIX 20x120	8,5 mm	6	1,44	28,80	36	51,84	1.057
BATTISCOPA 5,5x120	8,5 mm	6	7,20 ml	7,92			
GRADONE 120x32x4	8,5 mm	2	2,40 ml	22,85	1		
GRADONE ANGOLARE 120x32x4	8,5 mm	1	1,20 ml	11,42	1		
ELEMENTO "L" 80x32x4 OUTDOOR	8,5 mm	2	1,60 ml	10,00			
ELEMENTO "L" 80x32x4 OUTDOOR	20 mm	2	1,60 ml	14,00			
GRADONE BORDO ARROTONDATO 80x40 OUTDOOR	20 mm	2	1,60 ml	29,00			
GRADONE BECCO DI CIVETTA 80x40 OUTDOOR	20 mm	2	1,60 ml	29,00			
ANGOLARE BORDO ARROTONDATO 160x40 OUTDOOR	20 mm	1	1,60 ml	25,00			
ANGOLARE BECCO DI CIVETTA 160x40 OUTDOOR	20 mm	1	1,60 ml	25,00			

I DATI RELATIVI A IMBALLAGGI E PESI POSSONO SUBIRE DELLE VARIAZIONI / INFORMATIONS AND DETAILS RELATED TO PACKAGING AND WEIGHT ARE SUBJECT TO CHANGE

GRES PORCELLANATO . PORCELAIN STONEWARE  
NAT: EN14411/G Bia UGL (ISO 13006/G) - 20MM: EN14411/G Bia (ISO13006/G)

CARATTERISTICHE TECNICHE PHYSICAL PROPERTIES	NORME NORMS	VALORE PRESCRITTO DALLE NORME REQUIRED STANDARDS	VALORE GARDENIA GARDENIA VALUES	
 <b>Lunghezza e larghezza dimensione media di ogni piastrella</b> Length and width of the average-sizes tile	ISO 10545-2	± 0,5%	<b>Conforme</b> According	
 <b>Assorbimento d'acqua</b> Water absorption	ISO 10545-3	E ≤ 0,5%	<b>Conforme</b> According	
 <b>Resistenza alla flessione</b> Bending strength	ISO 10545-4	<b>Spessore / Thickness &gt; 7,5 mm</b> <b>Modulo di rottura &gt; 35 N/mm²</b> Module of ropture > 35 N/mm² <b>Sforzo di rottura &gt; 1300 N</b> Breaking resistance > 1300 N	<b>Spessore / Thickness &lt; 7,5 mm</b> <b>Modulo di rottura &gt; 32 N/mm²</b> Module of ropture > 32 N/mm² <b>Sforzo di rottura &gt; 700 N</b> Breaking resistance > 700 N	<b>Conforme</b> According
 <b>Resistenza all'abrasione profonda</b> Abrasion deep resistance	ISO 10545-6	< 175 mm³	<b>Conforme</b> According	
 <b>Resistenza all'abrasione superficiale</b> Abrasion resistance	ISO 10545-7	<b>In funzione della destinazione d'uso</b> According to the destination of final use	-	
 <b>Resistenza agli sbalzi termici</b> Thermal shock resistance	ISO 10545-9	<b>Richiesta</b> Required	<b>Resiste</b> Resists	
 <b>Resistenza al gelo</b> Frost resistance	ISO 10545-12	<b>Richiesta</b> Required	<b>Ingelivo</b> Frost proof	
 <b>Resistenza all'attacco chimico</b> Chemical resistance	ISO 10545-13	<b>MIN UB</b>	<b>Conforme</b> According	
 <b>Resistenza alle macchie</b> Stain resistance	ISO 10545-14	<b>UGL: valore da dichiarare</b> UGL: value to declare	-	
 <b>Resistenza allo scivolamento</b> Slip resistance		B.C.R.A. C.A. μ 0,19 <b>Scivolosità pericolosa</b> - Dangerously slippery 0,20 < μ < 0,39 <b>Scivolosità eccessiva</b> - eExcessively slippery B.C.R.A. G.B. 0,40 < μ < 0,74 <b>Attrito soddisfacente</b> - Satisfactory grip μ 0,75 <b>Attrito eccellente</b> - Excellent grip ASTM C 1028 (S.C.O.F.) Slip resistant (> 0,60) DIN 51130 <b>In funzione dell'ambiente o della zona di lavoro</b> Basing on the environment or the working area DIN 51097 - ANSI A137.1:2012 > 0,42	> 0,40 > 0,40 > 0,60 Dry > 0,60 Wet NAT R10 20 MM R11 NAT A+B 20 MM A+ B+C > 0,42	
<b>Variazione cromatica</b> Shade variation	V3	 <b>Aspetto uniforme</b> Uniform appearance  <b>Lieve variazione</b> Slight variation  <b>Moderata variazione</b> Moderate variation  <b>Forte variazione</b> Substantial variation	V1 V2 V3 V4	

cod. 6002188

Le caratteristiche di superficie e le tonalità dei prodotti ceramici illustrati in questo catalogo sono da ritenersi puramente indicative. Optical features and color shades of ceramic materials illustrated in this catalogue are to be regarded as mere indications.

MKTG 226 Gardenia Orchidea

 GARDENIA  
ORCHIDEA

Via Canaletto, 27  
41042 Spezzano di Fiorano MO (Italy)  
T +39 0536 849611 - F +39 0536 849856  
[www.gardenia.it](http://www.gardenia.it) - [info@gardenia.it](mailto:info@gardenia.it)

  
Ceramics of Italy

